

CIPHER LAB
Smarter

1860 series



Industrial Handheld RFID Reader

With the rising trend of RFID technology driven by applications such as asset management and item level tagging in Warehousing, Distribution Center and Retailing industries. CipherLab thoughtfully developed the 1860 series to help enterprises smoothly adopt the RFID technology into the existing operations. CipherLab's 1860 series provides strong RFID reader options to extend RFID reading and writing capabilities. Combining with versatile pairing that is compatible with existing mobile devices, users can simultaneously handle both RFID and barcode applications seamlessly.



1.5M
MULTIPLE
DROPS

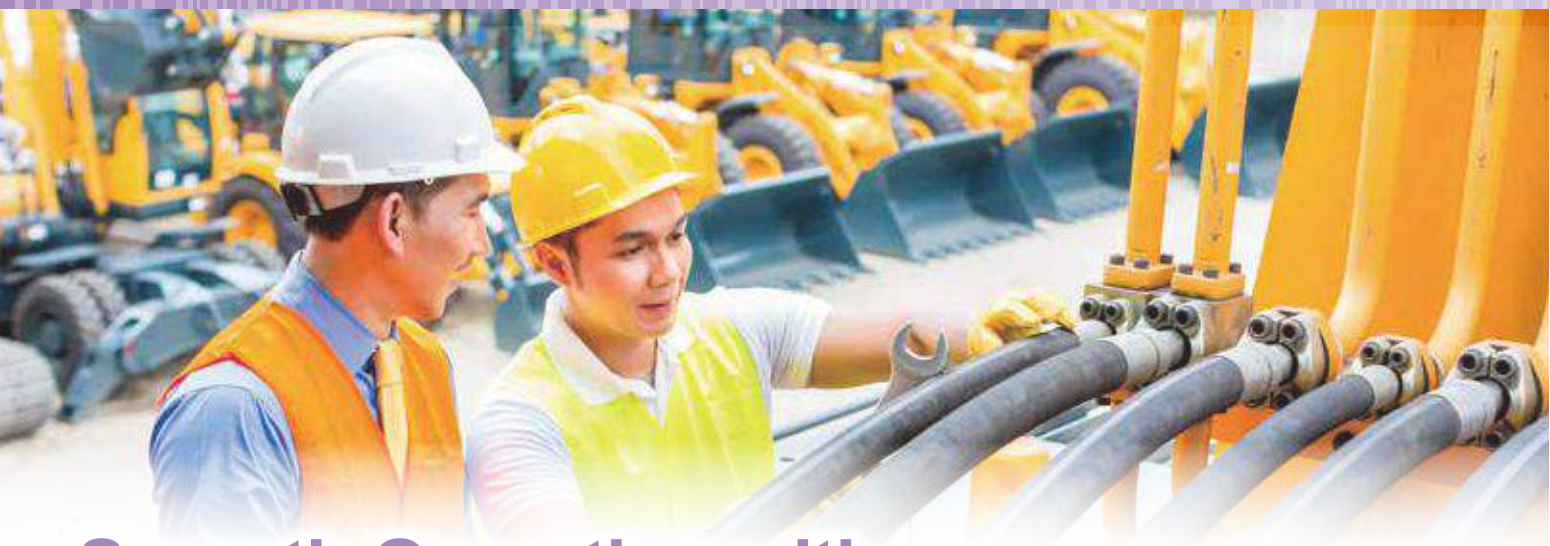
IP64

1,000
TUMBLES
AT 1M



1860 series

Handheld RFID Reader



Smooth Operation with Strong RFID Technology

CipherLab's 1860 RFID handheld reader is carefully crafted to integrate RFID technology into your operation easily. Along with up to 5 m RFID reading range and *Bluetooth*® pairing versatility to existing mobile devices, the 1860 series also comes equipped with powerful software utilities for easy configuration and customization for user friendliness. More than just these advantages, its IP64 rugged design and custom mounts for different mobile devices also provide non-stop productivity and effortless one hand operation to produce results with comfort.



High Performance Independent RFID Reader

The 1860 series is a device to make RFID data collections easy and efficient. 1860 series has a long reading range from near contact to as far as 5 m (16.5 ft.) and write data up to 1.5 m (4.9 ft.) away. On top of that, it is able to simultaneously read manifold EPC Gen 2 (ISO 18000-6C) tags so workers can easily capture multiple data at one time. The human effort on tracking and managing every asset is therefore reduced to create maximum productivity for where RFID becomes the only feasible identification and data collection alternative.



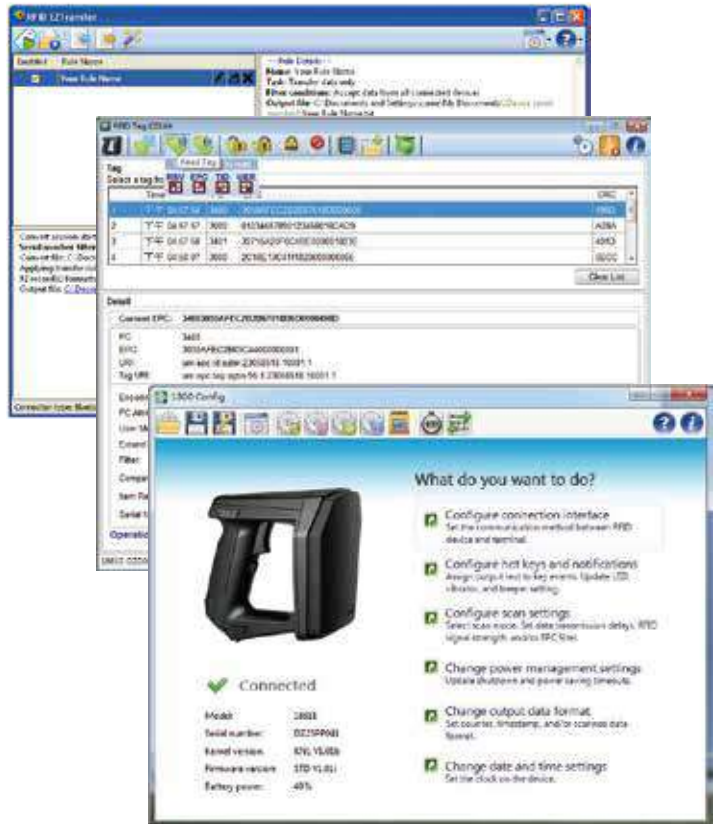
Versatile Data Capture for Existing Mobile Devices

CipherLab's 1860 RFID handheld reader achieves versatile data collection with UHF RFID, 1D and 2D barcode capabilities. Unique from typical RFID readers, the CipherLab 1860 handheld RFID reader gives you extended RFID reading and writing capabilities via *Bluetooth*® pairing with user's existing mobile devices. The 1862 is specially equipped with *Bluetooth*® V4.0 dual mode which is growing in popularity and backward compatible with future and existing smart device. This ultimately means that there is no need for high-cost replacements.



Easy Configuration with Powerful and Value-Added Software

The CipherLab's 1860 RFID handheld reader is supplied with multiple configurators that complement business operations. It comes with EZSuite which is a comprehensive suite of intuitive software utilities including EZConfig, EZTransfer and EZEdit. EZSuite allows for simple configuration for the 1860 series based on user's specific settings, such as connection interface, hot keys, tag data edit, convert and updates. Moreover, Development tools such as SDK for Windows® Mobile, Windows® CE and Android devices allow users to customize applications through various platforms.



EZConfig

The utility for tweaking the settings of the 1860 series at a few clicks



EZTransfer

To retrieve data from the 1860 series to computer when 1860 is set to memory mode



EZEdit

Editing an RFID tag when using the 1860 series to read and write tags

Durable Designs Producing Non-Stop Productivity with Simple Operation

Extensively tested for durability, the CipherLab 1860 handheld RFID reader is able to meet challenges from harsh environments. It is rated IP64 and able to sustain multiple drops onto concrete from 1.5 m (5 ft.) plus 1,000 tumbles at 1 m (3 ft.). It offers continuous functionality regardless of harsh conditions with dusts and humidity or accidental falls onto rough surfaces. The CipherLab 1860 handheld RFID reader further ensures continuous productivity with effortless one hand operation. Just simply snapping your mobile computers or smart devices on its custom mounts attached to the 1860 handheld RFID reader, users could enjoy hassle-free and comfortable operation via a single unit.



Switch for RFID tags or barcodes





1860 series

Handheld RFID Reader



		1861	1862
Performance	CPU	ARM Cortex-M3 32 bit	
	Memory	4 MB	
	Operating power	Rechargeable 3.7V 2500 mAh Li-ion battery	
	Working hours ¹	10 hours	8 hours
	Alert	Tri-color LEDs (red / blue / green), vibrator, beeper	
Communication interface	WPAN	Bluetooth® V2.1 + EDR class 2	Bluetooth® V4.0 dual mode (2.1 + EDR / BLE)
	Bluetooth® profile	SPP Slave, Master, HID	
	USB	Virtual COM	
RFID data capture	Frequency	UHF : 865 ~ 868 MHz / 902 ~ 928 MHz	
	Read / Write range ²	Up to 1 m (3.3 ft.) / Up to 0.5 m (1.6 ft.)	Up to 5 m (16.5 ft.) / Up to 1.5 m (4.9 ft.)
	Antenna type	Internal antenna	
	Support tags	EPCglobal UHF Gen 2, ISO 18000-6c	
	Max. output power ³	24 dBm	30 dBm
Physical characteristics	Keys	2 function keys, 1 trigger key, 1 toggle switch	
	Dimensions (L x W x H)	163.5 x 85.7 x 146.5 mm	
	Weight (w/ battery)	520 g / 18.3 oz.	
User environment	Operating temperature	-10 °C to 50 °C / 14 °F to 122 °F	
	Storage temperature (w/o battery)	-30 °C to 70 °C / -22 °F to 158 °F	
	Humidity (non-condensed)	Storage 5% to 95% / Operating 10% to 90%	
	Impact resistance	Multiple 1.5m / 5 ft. drops onto concrete, 5 drops on each side / 1,000 tumbles at 1 m (3.3 ft.) / IP64	
	Electrostatic discharge	± 15kV air discharge / ± 8kV direct discharge	
	EMC regulation	CE, RoHS, REACH, WEEE, ErP, FCC, NCC, SRRC, JRL, RCM(AU)	CE, RoHS, REACH, WEEE, ErP, FCC, NCC
Configuration		Can be configured through PC, Windows® mobile computers, CipherLab terminals, and a .NET SDK (CE, Mobile) via 1860 Configurator.	
Accessories		3610 Bluetooth® transponder, micro USB cable, battery charger, 2 battery packs, CipherLab CP55/ CP50/ 9600/ Universal and other custom mobile computer mounts on demand.	
Warranty		1 year	

1. Based on one scan per five seconds at 1-meter distance.
2. Actual read / write range is dependent upon a number of factors, including the specific tag used, nature of the items tagged, and presence or absence of radio interference.
3. Output power varies to be in line with local regulations.



ACCESSORIES					
	Battery Charger	CipherLab 9600 Mobile Computer Mount	CipherLab CP50 / CP55 Mobile Computer Mount	Universal Mount (clamp arm width: 35 ~ 80mm)	3610 Bluetooth® Transponder



HEADQUARTERS
CipherLab Co., Ltd.
 12F, 333 Dunhua S. Rd., Sec.2
 Taipei, Taiwan 10669
 Tel +886 2 8647 1166
 Fax +886 2 8732 3300
 www.cipherlab.com

CipherLab Electronics Trading (Shanghai) Co., Ltd.
 J Room, 4F, No.728 West Yan'an Rd.
 Changning District, Shanghai
 China 200050
 Tel +86 21 3368 0288
 Toll Free 400 920 0285
 Fax +86 21 3368 0286

CipherLab USA Inc.
 2552 Summit Avenue STE 400
 Plano, Texas, USA 75074
 Tel +1 469 241 9779
 Toll Free 888 300 9779
 Fax +1 469 241 0697